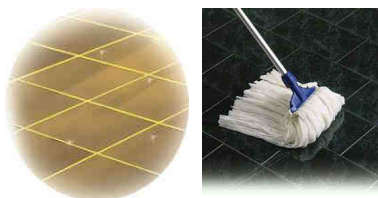


FLOOR TREATMENT



**Self-shining acrylic emulsion
for hard plastic floors**

Pictograms of use:



Packaging:

TSTM046: 4 l. Container – 4 units

Signage Pictograms:

GENERAL HEALTH REGISTER FOR
FOODS: 37-00000271/M

Company certified by BVQI:
Nº ESPMDD006325/ISO 14001
ENVIRONMENTAL MANAGEMENT



Description:

Self-shine emulsion, made of acrylic polymers and first class waxes, for hard and soft floors. High durability and excellent brightness.

Key Properties:

Especially developed for the treatment of marble floors, terrazzo, rubber pavements, plastics, linoleum, etc.

Use Instructions:

Make a first cleaning of the surface to be treated with THOMIL FLOOR STRIPPER, for the removal of dirtiness and any other wax rests. Dry.

Apply GLAZE WAX directly on the floor and spread a thin and uniform layer, with a polisher or mop.

Let dry for at least 30 minutes (depending on humidity, porosity ...). Apply a second layer perpendicular to the first one.

On extremely porous floors, a previous sealing with THOMIL SEALANT is recommended.

Technical Data:

* PROPERTIES:

Metal glaze wax. Self-shining and anti-slipping. Direct use. High gloss. High water resistance and neutral detergent. Good high traffic properties, such as heel marks and scratches.

* SPECIFICATIONS:

Appearance: Light liquid

Colour: white

Odour: Characteristic

Density (20°): 1.025 +/- 0.002 Gc/cc.

PH (20°): 9 +/- 0.5

Dry Residue: 15.5 +/- 0.5%

* COMPOSITION: Acrylic polymers. Waxes, plasticizer, moisturizers, resins and additives.

Preservation and Storage:

Keep in its original package tightly closed, protecting it from cold and intense heat. Avoid freezing. Do not expose to direct sunlight.

Security and Handling:

Contains: Methylchloroisothiazolinone and Methylisothiazolinone. May produce an allergic reaction. Safety data sheet available on request. FOR PROFESSIONAL USE.

Warnings:

In case of accidental ingestion, please contact the National Toxicology Service.

Our TECHNICAL DEPARTMENT
will attend any doubts or
questions you have about
products or applications
without obligation.
Tel. (+34) 91 6910263



NOTE: The warranty of Thomil applies only to the quality of the product, and does not assume liability for improper use of it.

Ctra. Andalucía. km. 18. 28320 Pinto (Madrid) www.thomil.com: profesional@thomil.com